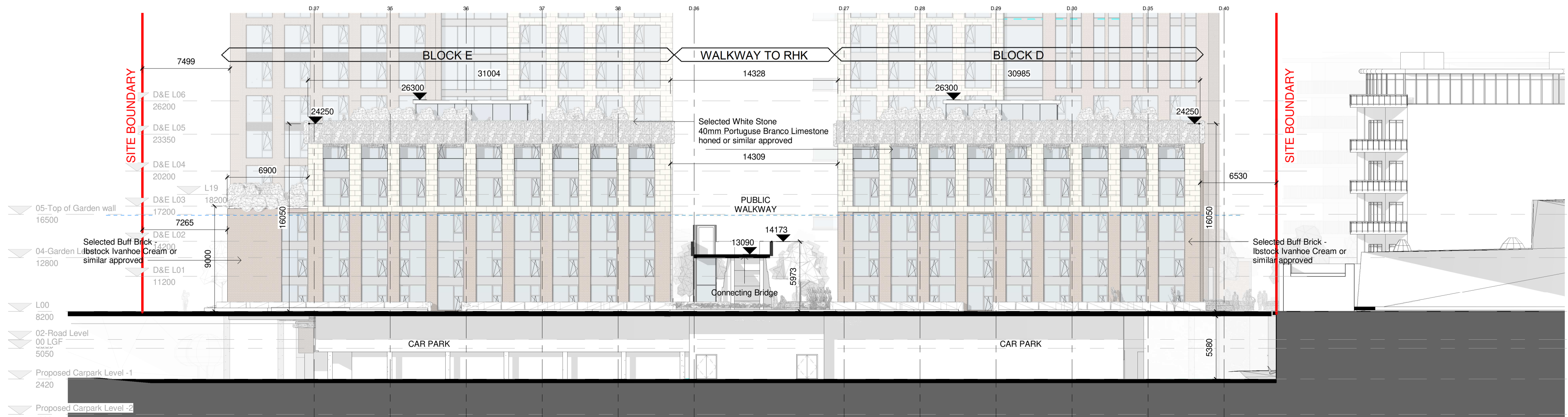
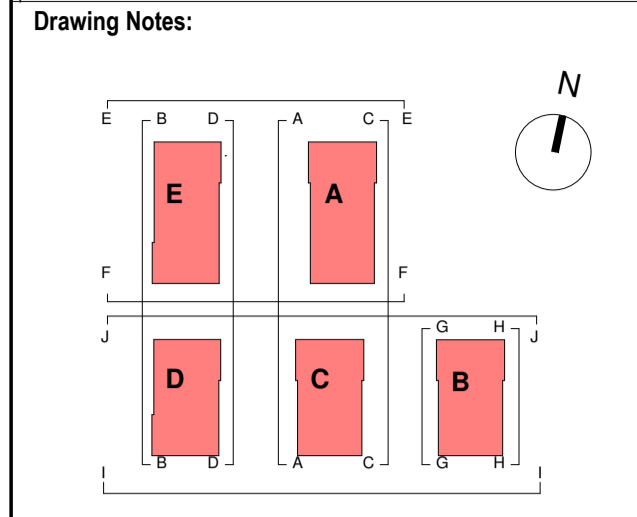


Proposed Elevation AA  
1:200



Proposed Elevation BB  
1:200

**Notes:**  
 - Do not scale from this drawing. Use figured dimensions in all cases.  
 - Verify dimensions on site and report any discrepancies to the Architect immediately.  
 - This drawing is to be read in conjunction with the Architect's Specification.  
 - © This drawing is copyright and may only be reproduced with the Architect's permission.



**KEY PLAN**

| Rev. | Date     | Drawn | Details of Issue / Revision |
|------|----------|-------|-----------------------------|
| P01  | 02/07/21 | EOB   | Issued for Planning         |



**Client Details:**  
 HPREF HSQ Investments Limited

**Project Details:**  
 HSQ Feasibility  
 Heuston South Quarter, St John's Rd W,  
 Kilmainham, Dublin 8

**Drawing Title:**  
 Proposed Elevations 01

|                                |                         |                            |
|--------------------------------|-------------------------|----------------------------|
| Job No.<br><b>P19-213D</b>     | Sheet Size<br><b>A1</b> | Scale @A1:<br><b>1:200</b> |
| Issue Date:<br><b>17/09/21</b> | Drawn By:<br><b>IOB</b> | Reviewed By:<br><b>EOB</b> |

|   |                            |
|---|----------------------------|
| Status  | Purpose of Issue           |
|   | <b>Planning Permission</b> |
| Project-Originator-Zone-Level-Type-Role-Classification-Number |                            |
| <b>RAU-ZZ-ZZ-DR-A-ELE-06201</b>                               | Revision                   |
|   | <b>P 01</b>                |